

CT DEEP **2017**
FISHING REPORT NUMBER 22
9/7/2017



Rainbow Trout (*Oncorhynchus mykiss*)



YOU CAN FIND US DIRECTLY ON FACEBOOK. This page features a variety of information on fishing, hunting, and wildlife watching in Connecticut. The address is www.facebook.com/CTFishandWildlife.

SHARE THE EXPERIENCE
Take someone fishing

INLAND REPORT

Fall TROUT Stocking- Trout were stocked into the **Housatonic River TMA** (Sharon to Cornwall) and into the **Farmington River** (New Hartford to Unionville) last week, no stocking occurred this week. More trout stocking soon as conditions continue to be improve for stocking. Stay up to date with our daily stocking post on [Facebook](#), our [interactive trout stocking map](#), and our [stocking report](#).

LARGEMOUTH BASS fishing is reported as very good. Places where the largemouth are eager to bite include West Hill Pond, East Twin Lake, Gardner Lake, Pickerel Lake, Beseck Lake, Amos Lake, Beach Pond, Highland Lake, Seymour Reservoir #4, Crystal Lake, Mudge Pond, West Side Pond, Tyler Lake, Mansfield Hollow Reservoir, Dog Pond, Hatch Pond, Park Pond, Lake Wononskopomuc, Lake Saltonstall, Bishop Swamp, Winchester Lake, Congamond Lakes, Quinebaug Lake, Black Pond (Meriden), Burr Pond, Griggs Pond, Anderson Pond, Billings Lake, Moodus Reservoir, Aspinook Pond, Babcock Pond, Pachaug Pond, Lake Hayward, Quonnipaug Lake, Rogers Lake and Stillwater Pond.

Tournament angler are from Amos Lake (fair action, but lots of 2-3 lb fish in the bags and a 3.69 lb lunker), Pachaug Pond (fair for most, with 4.7 lb and 4.5 lb lunkers), Powers Lake (fair at best, with no size with a 1.87 lb lunker), for an evening tourney, Lake Lillinonah (fair to good, 3.07 lb and 3.02 lb lunkers), and Wononskopomuc Lake (fair to good for most, fish averaged a bit over 2 lbs apiece, but no really large ones, just a 3.56 lb lunker).

SMALLMOUTH BASS. Catches reported from Candlewood Lake, Housatonic River (Upper), Naugatuck River, Lake McDonough, Lake Zoar and Lake Lillinonah. Housatonic River smallmouth fishing has been good.

Tournament angler reports are from Pachaug Pond (as usual, a few in the bags, including a 2.8 lb lunker), and Lake Lillinonah (fair for smallmouth).

CARP are keeping rods bent in Lake Lillinonah, Connecticut River (Hartford and Wethersfield Cove), Lower Farmington River, lower Quinebaug River, lower Housatonic River, and Aspinook Pond.

Connecticut Hunting & Fishing Day
Saturday September 23 10AM to 4PM

- Hunting & Trapping Tips
- Fishing & Boating Displays
- Archery Shooting
- Fly-tying and Casting
- Hunting & Fishing Clubs
- Conservation Organizations
- Birds of Prey
- Kid's Activities
- Fish & Wildlife Exhibits
- Equipment Vendors
- Laser shot, Dart gun, Blow pipe
- BB Gun Shooting Range
- Hunting Dog Demonstrations

- NEW LOCATION -
In association with **Cabela's**
475 East Hartford Blvd N.
East Hartford, CT
Connecticut Department of Energy and Environmental Protection
www.ct.gov/deep/HuntFishDay
860-424-3011; deep.ctwildlife@ct.gov

Admission and all activities are **FREE!**

KOKANEE SALMON are slow, with a few reports from East Twin Lake (early morning) and West Hill Pond (early night fishing with corn, south end).

NORTHERN PIKE. Little info this week to help you target these awesome fish. Places to fish include Bantam Lake, Lake Lillinonah, Connecticut River and its coves (Hartford to Haddam), and Pachaug Pond.

WALLEYE fishing appears fair to poor. Look for Walleye in the evening or early morning along steep drops in Mount Tom, Saugatuck Reservoir. Squantz Pond, Batterson Park Pond, Beach Pond, Cedar Lake, West Thompson Lake, Gardner Lake, or Mashapaug Lake.

SAVE THE DATE
Connecticut Hunting & Fishing Day

Saturday, September 23, 2017.

10 am-4 pm

CABELA's, East Hartford

Get all of the details at
www.ct.gov/deep/huntfishday

CATFISH – great fishing is ongoing in our [Catfish Management Lakes](#) and many [Community Fishing Waters](#). The deeper “holes” in the Connecticut River and Housatonic River are also producing some 4-8 pounders. Try cut fish or live shiners to entice a cat to bite.

PANFISH one work- excellent. For some great family fun try shore fishing in shallow areas with a popper. Check out the “panfish” map in our new application “[CT is Fishy](#)” to find a new place to fish close to you.

FALLFISH (DACE) are the largest native minnow and can reach over 15 inches (typically 8-12 inches). Fallfish provide excellent action on ultra-light tackle and fly rods. The fish are aggressive and will hit a variety of natural and artificial baits (use the same gear you would for trout). Fishing for Fallfish is a great way to spend time on a river

Good Fallfish waters include the Willimantic River, Shetucket River, Natchaug River, Lower Farmington River (Avon-Windsor), Housatonic River (Cornwall to Kent), Scantic River (Somers to East Windsor), and Yantic River. The current [state record](#) Fallfish (2.25 pounds) was taken in 2012 by Chad Tessman.

TROUT-LAKES & PONDS – Most lakes remain poor to fair. Best bets are to hit the traditional deep cold lakes like; East Twin Lake, West Branch Reservoir, Long Pond, West Hill Pond, Crystal Lake, or Highland Lake.

TROUT- RIVERS & STREAMS. Conditions for trout fishing remain good and will improve with the forthcoming fall stocking. Flows are very fishable - *see stream flow graphic on page 3.*

We encourage you to fish one of the many Wild Trout Management Areas. These waters harbor incredibly colorful fish year-round. Worth some time and effort. Check out the “Go Wild” map in our new application “[CT is Fishy](#)” to find a new place to fish close to you.

Farmington River – Fishing remains very good and forecast conditions should be really good this weekend following the addition of 1,400 stocked brown trout from New Hartford to Unionville (*a reminder that as of September 1, the fishing is catch and release*). The West Branch flows are clear and should be steadily dropping through the weekend (currently 49 CFS at Riverton, with the Still River at 126 CFS) and morning water temperatures ranging from the mid to upper 50's °F below the dam to the mid 60's °F through New Hartford.

Hatches/patterns shifting to the fall patterns with good numbers of flying ants (recent afternoons) and black caddis. Other perennial favorites include *Isonychia bicolor* (#10-14, fast water, evening), Tricos (#24), Blue Wing Olives (*Drunella* sps. & *Baetis* sps.;#18, 20-24, mid-late afternoon), Cahills/Summer (*Stenonema ithaca*, #12-14, evenings), Caddis (tan #16-18, all day; green #22-26, evening; summer pupa #18-20 morning), Midges (#22-32, morning), Black Ants (#14-20, mid-day in fast water), Black Beetles (#14-18, mid-day), and Stone

Hopper (#8-14, mid-day) are successful patterns. Try a “muddler minnow” to trigger that big ‘bow into hitting your line.

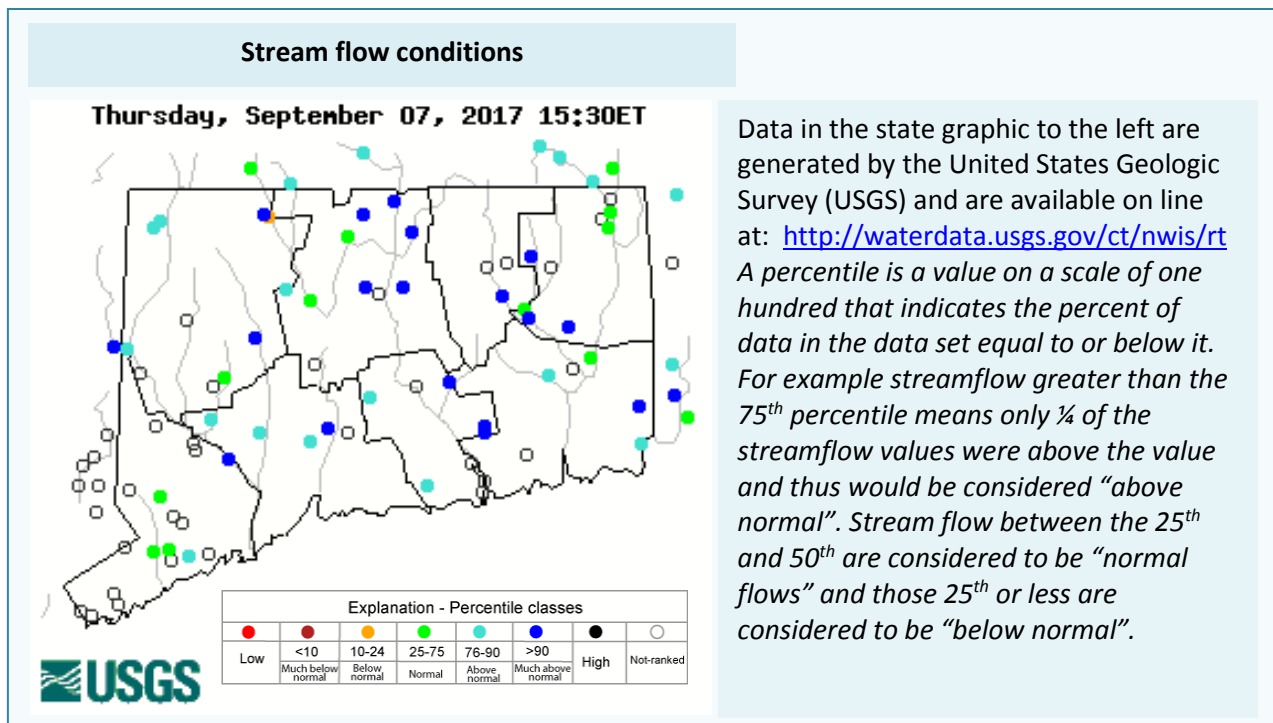
Housatonic River – Fishing has been very good and conditions for the weekend should be good following recent stocking of 4,000 Brown Trout in the Trout Management Area (Sharon to Cornwall) and 500 Brown Trout into the Bull’s Bridge and Tenmile River TMA (Kent). Flows are high and have yet to stabilize from the rain earlier this week. The river is fishable, but flows are more like early spring (currently 725 CFS at Falls Village and 1,090 CFS at Gaylordsville). Morning water temperatures continue in the upper 60’s to low 70’s°F. Can’t go wrong taking a few casts for **Smallmouth (Sharon to Kent), Pike (Bull’s Bridge Area), Fallfish (Sharon to Kent), and Carp (Sharon or Bull’s Bridge area).**

Hatches/patterns include a good number of Black Caddis. Patterns to try include White Zonkers, Woolly Buggers (go big- larval dobsonflies can be up to 4” in length and are a favorite food item), Muddlers, Grey or Black Ghosts (#4-10). Other insects include flying ants (#14-16, mid-day, when windy/humid, September is peak month), Fall Sulfurs (#16-18), Blue Wing Olives (#18-22), Tricos (#20-22), Leadwing Coachman (#10-12 evening, September is peak month), Sulfurs duns (#16-18, below the dam due to low temperatures, morning; afternoon to early evening for spinners), Light Cahill (#14-18, early morning & evening). Golden stonefly nymphs hatch at first light and adults egg-lay after dark.

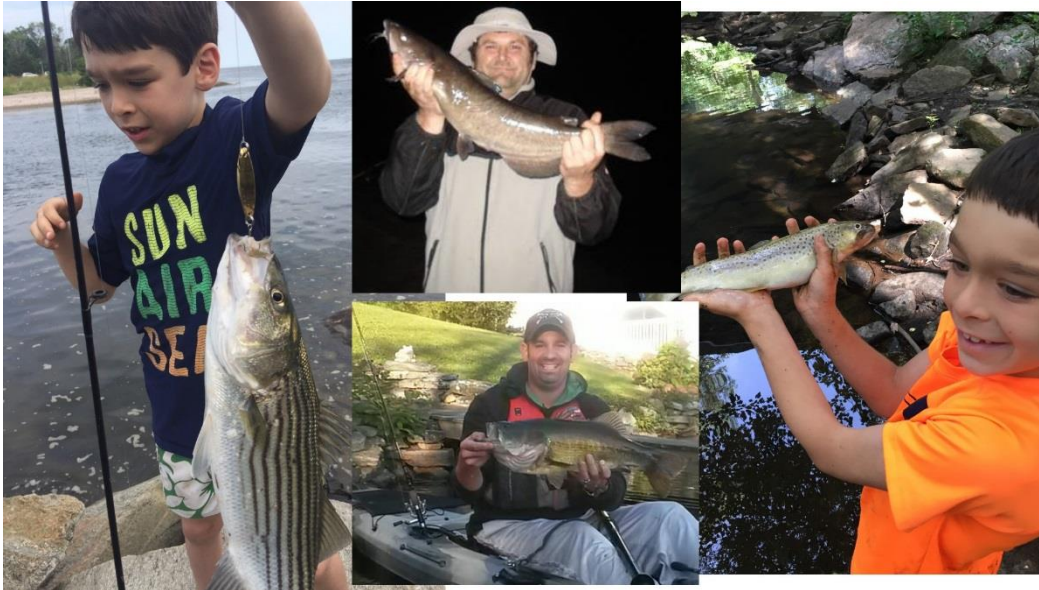
Streamer fishing and nymphing with big stoneflies is usually productive. Streamer patterns to try include White Zonkers, Woolly Buggers (#2-12), Muddlers, Lion Buggers, and Grey or Black Ghosts (#4-10). Light Cahill (#12-14, evening), Isonychia (#10-12), Sulfur (#16-18) and Black caddis (#14-18, early morning & evening). Don’t forget poppers and streamers (morning & evening).

CONNECTICUT RIVER

LARGEMOUTH BASS are very active throughout the river and in the coves. **SMALLMOUTH BASS** are offering some decent action in the upper river (Windsor & Enfield area). **CARP** are being caught in the upper and lower river on pre-baited ‘swims’. Anglers are finding some chunky **CATFISH** by night angling in the Hartford to Middletown stretch. Try from just north of Hartford on downstream, fish the outside bends (deep holes are producing as well, try cut bait).



FACEBOOK FISH OF THE WEEK: POST YOUR CATCHES ON FB @CTFISHANDWILDLIFE



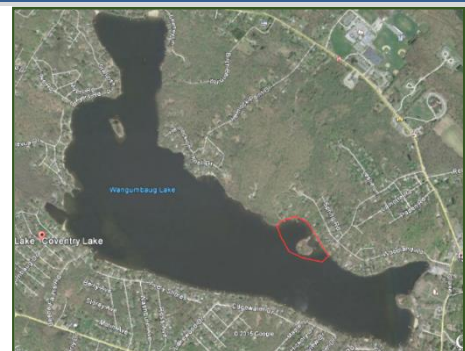
Evan S. is off to a **great** first year of fishing (Striped Bass and Brown Trout), Michael S. being rewarded for his exploration of catfish waters with several 3-6 pounders, and a chunk of a Largemouth Bass caught by David F. on Red Cedar Lake.

NOTES & NOTICES:

CONNECTICUT RIVER (invasive species alert). Hydrilla was recently found in the main stem Connecticut River in Glastonbury (near Glastonbury’s Riverfront Park & Boathouse). See the Coventry Lake entry below for what river users should do to prevent spread of this invasive plant to other waterbodies.

COVENTRY LAKE (invasive species alert). Hydrilla, a very highly invasive aquatic plant, has been found growing in Coventry Lake. All lake users should take extra care to check and clean their boats (including canoes, kayaks and rowing sculls), trailers, and fishing equipment before leaving the boat launch, or leaving the lakeshore.

WEST BRANCH FARMINGTON RIVER (invasive species alert). *Cymbella janischii* is a close relative of *Didymo* and has been introduced to the West Branch Farmington River (first noticed in 2011). *C. janischii* is native to the Pacific Northwest and not naturally found on the Eastern seaboard. Currently this type of “Rock Snot” is very abundant. The primary area of the river is from New Hartford upstream to Riverton. Note: *Didymo* is still present primarily in the West Branch above the Still River in Riverton. To help prevent the spread to other rivers and streams, all anglers should take extra care to clean and dry waders that have been in contact with rock snot. We recommend having a pair just for use only in the Farmington River.



Coventry Lake (Wangumbaug Lake) boaters should avoid the area outlined in red to avoid fragmenting and spreading hydrilla. This is only area in the lake where hydrilla has been found.

HIGHLAND LAKE (swimming & boating race). A canoe/kayak race and swim event is scheduled for Saturday, September 9, at Highland Lake from 9:30 am to 12 pm. This event will be held in the “North Bay” at Resha and

Holland beaches in the vicinity of the state boat launch. Boaters should use extra care when accessing the lake from the state launch.

RAINBOW RESERVOIR (drawdown). The reservoir is being drawn down approximately 15 feet to facilitate dam maintenance, making the state boat launch unusable. Work is currently expected to be completed by September 13.

PHOTO CONTEST: Do you have the next Angler's Guide cover shot? Email us your high quality (high resolution) photos **by November 1** to Deep.inland.fisheries@ct.gov and include [photo contest](#) in the subject line.

CT FISHIN' TIPS is our monthly e-newsletter dedicated to providing information, tips and pointers about fishing in Connecticut. Get CT Fishin' Tips delivered automatically to your in box by subscribing at www.ct.gov/deep/newslettersubscription

NEW! Youth Fishing Passport [Fishing Challenge Scorecard](#): Download the new scorecard for your Youth Fishing Passport Holder on the program web page at www.ct.gov/deep/yfp. Top anglers will receive a great prize pack of fishing gear.

LAKE & POND BATHYMETRIC MAPS

Bathymetric maps of many of Connecticut's public access lakes and ponds can be found online at:

www.ct.gov/deep/lib/deep/fishing/general_information/lakebathymetrymaps.pdf

Both plain line maps and maps overlaying an aerial photo available.



"Connecticut is Fishy!" a new interactive fishing resource for novice and expert alike. The link is on our main page at www.ct.gov/deep/fishing or hit it directly at <http://ctdeep.maps.arcgis.com/apps/MapJournal/index.html>

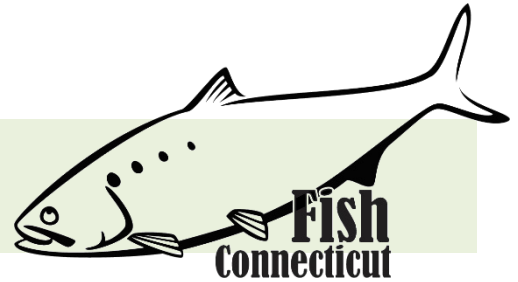
We are fortunate that within a 60 minute drive you can be fly fishing the famed Housatonic or Farmington River, catching monster pike in Bantam Lake, jumbo carp from the Connecticut River, or on the Sound fishing for tasty favorites like fluke, porgy, black sea bass, striped bass and bluefish.

This NEW interactive application has lots of great information, including maps and links, providing all you need to know about Connecticut's fisheries.

Give it a spin and let us know what you think!



MARINE FISHING REPORT



Surface water temperatures in Long Island Sound (LIS) are in the low to mid 70's °F. Check out the following web sites for more detailed water temperatures and marine boating conditions:

<http://www.mysound.uconn.edu/stationstat.html>

http://marine.rutgers.edu/mrs/sat_data/?nothumbs=1

<http://www.ndbc.noaa.gov/>

<http://www.wunderground.com/MAR/AN/330.html>

Connecticut State Boundary Line in Long Island Sound. Anglers please note: Though Connecticut has reciprocity with neighboring states (New York, Rhode Island, Maine and Massachusetts), residents of Connecticut are required to have a CT Resident Marine Waters Sport Fishing License to fish in the Marine District.

WHALES have been reported in Long Island Sound (in early July, juvenile humpback whales have been spotted on the New York side of the sound), please see check [WHALE WATCHING GUIDELINES](#).

Note: All marine mammals are protected by the Federal Marine Mammal Protection Act. Following these recommended operational guidelines helps minimize chances of harassing or injuring whales and violating Federal law. Guidelines apply to all large whales from Maine through Virginia, except North Atlantic right whales. It is illegal to approach a right whale within 500 yards (1500 feet) unless granted specific exemption or authorization.

SEA TURTLES: [See a Tangled Turtle? Call the Hotline!](#) 1-860-572-5955 ext. 107. This is the time of year when leatherback, loggerhead, green, and Kemp's ridley sea turtles return to northern waters, with many sightings around Long Island Sound.

ATLANTIC BONITO & LITTLE TUNNY fishing remains sporadic, but getting better as each day passes. These small tunas are cruising around from Newport, Pt. Judith, Watch Hill to Pine Island (including Fishers Island Sound), and the Race to Little Gull Island, from Bartlett Reef to Black Point and west to New Haven. Dawn/dusk is the best time to fish for these inshore tunas. **Try casting metal (heavy) lures to feeding fish on the surface. A quiet approach and finding birds (gulls/terns) actively feeding is the key to a successful trip.**

STRIPED BASS remains very good at night. Hook up with a charter boat and learn how to catch those "cow" bass. Live lining bunker (Atlantic menhaden) on the reefs at dawn and dusk still producing some nice bass (56 inches – 58 pounds). Peanut Bunker and adult Bunker (Atlantic Menhaden) schools are scattered throughout the western Sound. Try using a "bunker snagger" and then live lining a whole bunker for that CT trophy fish award sized striped bass rather than cutting up the bunker into chunks. Striped Bass prefer a live Bunker. You want the deck stacked in your favor.

The usual striper spots include the Watch Hill reefs, Ram Island Reef in Fishers Island Sound, lower Mystic and Thames River, the Race, Sluiceway, Plum Gut, Pigeon Rip, outer Bartlett Reef, Black Point, the "humps" south of

Hatchett Reef, lower Connecticut River, Long Sand Shoal, Cornfield Point, Southwest Reef (outer), Sixmile Reef, Falkner Island area, the reefs off Branford, New Haven Harbor and the upper reaches, Charles Island area, lower Housatonic River, buoys 18 and 20 off Stratford Point, Stratford Shoal/Middle Ground, Penfield Reef, around the Norwalk Islands, and Cable and Anchor Reef.

SUMMER FLOUNDER (fluke) is getting better as fall approaches (*Season closes on September 21*). They are feeding heavily prior to their migration south for the fall/winter. Summer Flounder (Fluke) in the 19" range are being reeled in at **Silver Sands and Gulf Beach**, as well as **Todds Point in Greenwich, Milford's Anchor Beach** and **Hickory Bluff Bridge** in the Rowayton section of Norwalk. Fishermen are reporting some very large doormat fluke being caught (10 lbs 4 ozs, western Sound). Live lining snapper blues in deep water (80 to 100') is the preferred method by fluke sharpies in the fall. The usual summer flounder spots include the south shore of Fishers Island (Isabella Beach, Wilderness Point), Napatree Point and along the beach, off the Stonington breakwater, mouth of the Mystic River over to Groton Long Point, Twotree Island Channel, Black Point/Niantic Bay including the Bloody Grounds, Sound View Beach, Long Sand Shoal, Falkner Island area, New Haven Harbor, off the mouth of the Housatonic River during the flood tide, and around the Norwalk Islands.

Minimum size is 19 inches and the daily creel limit is 3 fish per person. [CT Bait & Tackleshop List](#)

BLACK SEA BASS fishing has been very consistent in the Sound. Black sea bass are still around **Can 12 and Can 16 off Milford and the Green Can "C" off Stratford Shoal Lighthouse**. The sea bass have just finished spawning and are feeding heavily on crabs and small fish throughout Long Island Sound. Plan a trip on a [party/charter boat](#) trip to fish off Block Island. There are many giant-sized sea bass (5-7 lbs) out there. Eastern Sound (Fishers Island to Block Island and northeast of Montauk) anglers are having better success. For those willing to travel, Block Island Sound is the place to be for humpback sea bass. Closer to home, the rocky reefs from Niantic, to Branford (Falkner Island) have been consistent all season. A reminder to all anglers...if you are fishing in water deeper than 100', barotrauma can cause released fish to struggle to make it back to the bottom. A descending devise such as the "Shelton Fish Descender" can help assist the sea bass air bladder to recompress and get safely back down to the depths. See [Fishsmart.org](#) for more information.

SCUP (porgy) fishing is good. The western Sound scup fishing has been on fire and this week catching 12"-17" jumbos has barely raised an eyebrow. The trifecta of **South Benson Pier, Ash Creek** and **Saint Mary's** has been fantastic. The **Wall at Stratford, Pleasure Beach Family Pier, Silver Sands State Park, Walnut Beach, Long Beach** in **Stratford** and **Gulf Beach Breakwater** and **Sherwood Island State Park** are all producing keeper porgy. Try Gardner's Island, Milford (Charles Island), Montauk and Niantic (Bartletts and Hatchetts Reef).

Very accessible shore fishing locations: Calf Pasture beach, Jennings and Penfield beach, Seaside Park, (Milford), Bradley Point Park (West Haven), New Haven, **Harkness State Park**, Rocky Neck State Park, **Kimberley Reef (Guilford)**, Meigs Point Hammonasset State Park and **Fort Trumbull State Park**. Locate your favorite [Enhanced Shore Fishing Opportunities](#) for these hard fighting and excellent eating "Reef Slammers". These "panfish of the sea" are easily caught on sandworms/cut squid or any other small piece of bait. Contact your [local bait and tackleshop](#) for updated fishing information.

BLUEFISH fishing very good. Large numbers of bluefish found in the lower estuaries and rivers feeding on menhaden. Eastern Sound has seen much better fishing for "alligator-sized" blues (11-17 lbs). Bluefish schools are still around although some have moved east. Nevertheless, there are still plenty around in the 2-5 pound and 6-8 pound class with an occasional 15 pounder. Bluefish are wonderful fighting fish but be careful handling them with their sharp teeth.

SNAPPER fishing has improved in the tidal creeks and rivers with fish measuring 6 to 12 inches in length.

BLACKFISH (TAUTOG) **CLOSED until October 10, 2017**

STRIPED SEAROBIN fishing continues to be steady for this “hardhead fish with spines and large pectoral fins”. Also, called “**Poor-Man’s Lobster**”, these fish are very common especially when bottom fishing at many of Connecticut’s shore fishing sites. With fish measuring over 22 inches and “barking up a storm” (grunting noise they make when handling them). They love sandworms, squid and any live or dead bait. They are also very good to eat. There are videos on how to clean/fillet these tasty eating fish.

HICKORY SHAD fishing is good in the Black Hall River/**Lieutenant River**, Housatonic River and the lower Connecticut River (DEEP Marine Headquarters fishing pier). Fishing remains good at Fort Trumbull, Black Hall, Clinton Harbor River systems and the lower Connecticut River (DEEP Marine Headquarters fishing pier). Both snappers and hickory shad can be found schooling together at these locations.

WEAKFISH fishing is surprisingly good in the central and western Sound. Weakfish in the 16"-23" range have been reported at **Long Beach in Stratford**. Many scup/sea bass anglers are catching them. Fish up to 26 inches are being reported in the West Haven beaches and Charles Island area. Also, look for weakfish in Guilford/Madison/New Haven Harbor areas.

NORTHERN KINGFISH fishing has been very good. Many reports this month from the western Sound including Walnut Beach and Sandy Point. Kingfish are found along hard sand bottom and frequent shallow water. Excellent fishing for the shore angler along with being excellent eating. If you play your cards right you might catch one of these beauties - great bragging rights.

BLUE CRAB fishing is very good in all tidal creeks and bays. Many of the large Jimmies (male crabs) have moved upstream. Incoming tide has produced better crab fishing...as the crabs migrate into the shallow water to feed. **Remember, all egg bearing females must be released without avoidable harm. Minimum carapace length is 5 inches for a hard shell crab.** Legal gear types include scoop (dip) net, hand line, star crab trap, circular (topless) trap not exceeding 26 inches in diameter. Maryland style crab traps are prohibited. **Chicken with the skin on it (along with a long handle dip net) and a small circular crab trap is the preferred method to capture these tasty crabs.** [Blue Crab Fact Sheet](#) Angler’s please also note: It is illegal to snag blue crabs.

For Current Connecticut Recreational Fishing Regulations: Anglers should consult the 2017 Connecticut Anglers Guide which is now available at most Town Clerks Offices, DEEP offices and at tackle stores selling fishing licenses. Current regulations, electronic versions of the Angler’s Guide and additional information can be accessed on the DEEP website at: www.ct.gov/deep/fishing.

The Connecticut Department of Energy and Environmental Protection is an Affirmative Action/Equal Opportunity Employer that is committed to complying with the requirements of the Americans with Disabilities Act. Please contact us at (860) 418-5910 or deep.accommodations@ct.gov if you have a disability and need a communication aid or service; have limited proficiency in English and may need information in another language; or if you wish to file an ADA or Title VI discrimination complaint.



DEEP WEEKLY Fishing Report
**Connecticut Department of
Energy & Environmental Protection**
79 Elm Street, Hartford, CT 06106
www.ct.gov/deep/Fisheries